



# MC2200/MC2700

## Configuration & Accessories Guide

Version 1.0  
Sept 14, 2020

# Contents

- I. MC2200/MC2700 Series Configuration Guide
- II. MC2200/MC2700 Series Accessories Guide



# MC2200/MC2700 Configuration Guide



# MC2200/MC2700 Configuration Matrix

Configuration Options	MC2X	Option	Description
Network Version	MC22XX-XXXXXXX MC27XX-XXXXXXX	2 7	WLAN Only WWAN-WLAN
WAN	MC2X0X-XXXXXXX MC2XAX-XXXXXXX MC2XBX-XXXXXXX MC2XCX-XXXXXXX	0 A B C	LAN Only Multi-Operator, HSPA+ / LTE (Americas + Canada), GPS Multi-Operator, GSM/HSPA+ / LTE, (ROW: EMEA + APAC), GPS Multi-Operator, GSM/HSPA+ / LTE, (China), GPS
LAN & PAN	MC2XXJ-XXXXXXX MC2XXK-XXXXXXX	J K	802.11a/b/g/n/d/h/i/k/r/ac + BT 5.x no NFC 802.11a/b/g/n/d/h/i/k/r/ac + BT 5.x with NFC
Operating System	MC2XXX-2XXXXXX MC2XXX-3XXXXXX MC2XXX-4XXXXXX	2 3 4	Android GMS Android AOSP (Non-GMS) Android GMS with eSIM Support
Data Capture	MC2XXX-XAXXXXX MC2XXX-XBXXXXX	A B	SE4100 Scanner SE4100 Scanner + 13MP Rear Facing Camera with Flash
Keypad	MC2XXX-XX3XXXX	3	34 (FN Numeric)
Battery	MC2XXX-XXXSXXX MC2XXX-XXXEXXX	S E	Standard Extended
Memory / Haptic	MC2XXX-XXXX2XX MC2XXX-XXXX3XX MC2XXX-XXXX4XX	2 3 4	2GB/16GB 3GB/32GB 3GB/32GB with Vibrator (China specific SKUs only)
Country	MC2XXX-XXXXBR MC2XXX-XXXXCN MC2XXX-XXXXIN MC2XXX-XXXXNA MC2XXX-XXXXRU MC2XXX-XXXXRW MC2XXX-XXXXTR MC2XXX-XXXXXP	BR CN IN NA RU RW TR XP	Brazil (Req'd for WWAN Only) China (WWAN / WLAN) India (WWAN / WLAN) North America (Canada, USA, PR) (WWAN / WLAN) Russia (WLAN / WWAN) Rest Of World WLAN / WWAN Turkey (WLAN / WWAN) PTT-Removed (Push-To-Talk) (WLAN/WWAN)

# **MC2200/MC2700**

## Accessory Guide

# MC2200 / MC2700 Accessory Overview

Built for work to get the job done across your business with accessories that enable better backroom management and expanded flexibility

Low-Cost Desktop USB-C Cradle



Hand Strap



Attachable Trigger Handle

4 Slot Battery Charger



Screen Protector

Single Slot Desktop Cradle with Spare Battery Charger. Supports optional Ethernet Module



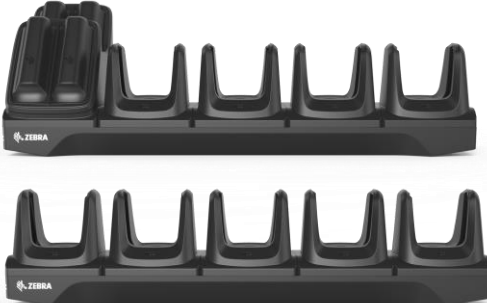
Holsters and Rubber Boots



Two Battery Options (3500mAh & 4900mAh)



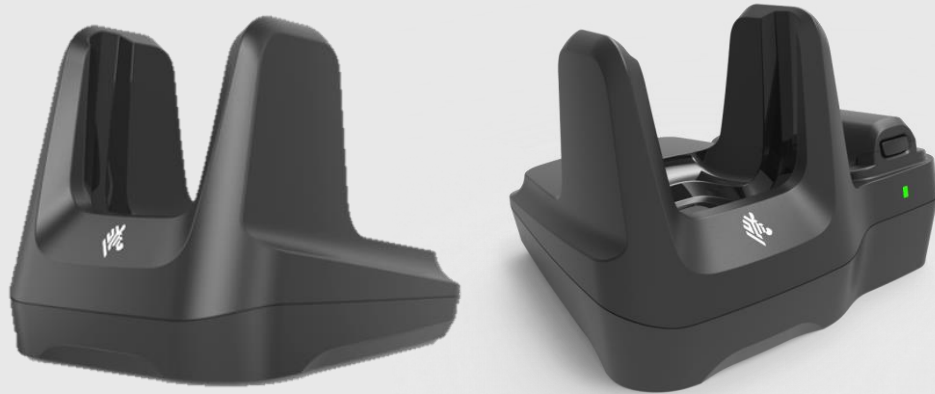
USB-C Charge Cable



Multi-Slot Cradle System (Two Options; 5 Terminal, 4 Terminal & 4 Battery Charger)

# Cradle System

## Single Slot Cradle



### Single Slot Cradle Options:

#### **CRD-MC2X-1SCU-01**

Single slot USB cradle charges one device. Allows USB communication to the device with integrated 1m (3.3') USB-A cable.

**Optional:** Power supply **PWR-WUA5V12W0XX** for charge only. Country specific part numbers are available for order

#### **CRD-MC2X-2SUCHG-01**

Single slot USB cradle with spare battery charging, charges one device and one spare battery. Allows USB or ethernet communication to the device with an additional micro-USB cable (25-124330-01R) or ethernet dongle (MOD-MT2-EU1-01).

**Requires:** Power supply **PWR-BGA12V50W0WW**, DC line cord **CBL-DC-388A1-01** and country specific 3 wire AC line cord.

### Additional Accessories for Device-only Single Slot Cradle



**PWR-WUA5V12W0XX**  
AC/DC power supply  
**AC Input:** 100-240VAC  
**DC Output:** 5VDC, 2.5A, 12.5W

World-Wide: **PWR-WUA5V12W0WW**  
Australia: **PWR-WUA5V12W0AU**  
Brazil: **PWR-WUA5V12W0BR**  
China: **PWR-WUA5V12W0CN**  
Europe: **PWR-WUA5V12W0EU**  
India: **PWR-WUA5V12W0IN**  
Korea: **PWR-WUA5V12W0KR**  
UK: **PWR-WUA5V12W0GB**

### Additional Accessories for Single Slot Cradle with Spare Battery Charger



#### **MOD-MT2-EU1-01**

USB To Ethernet Module. Mechanical switch selects between USB port and RJ45 Ethernet jack.



#### **PWR-BGA12V50W0WW**

Level VI AC/DC power supply (brick, replacement for PWR-S-14000-148R)

**AC Input:** 100-240VAC, 2.4A

**DC Output:** 12VDC, 4.16A, 50W

**Requires:** DC line cord and country specific grounded AC line cord.



#### **CBL-DC-388A1-01**

DC line cord for running the single slot cradles or battery chargers from a single Level VI power supply PWR-BGA12V50W0WW, Level VI replacement for PWR-S-14000-148R.

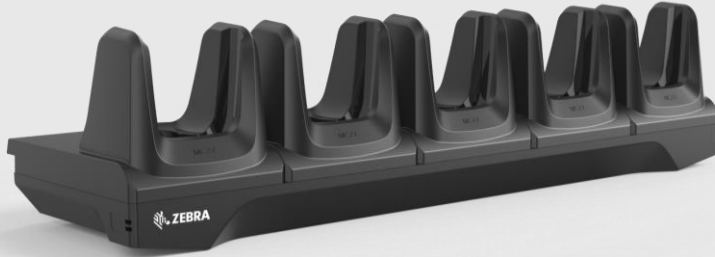


**Various Part Numbers – please contact your Zebra sales associate for more details**

AC line cord, 7.5 feet long, grounded, three wire for power supplies.

# Cradle System

## Multi-slot Cradles



### Multi-Slot Cradle Options:

#### **CRD-MC2X-5SCHG-01**

5-Slot Terminal Charger.

#### **CRD-MC2X-4SC4BC-01**

4-Slot Terminal Charger with 4-Slot Battery Charging.

**All Multi-Slot Cradles Require:** Power supply **PWR-BGA12V108W0WW**, DC cord **CBL-DC-381A1-01** and country specific 3 wire AC line cord.

## Main Features

- Charge only configurations
- Charges five devices or four devices with four spare batteries
- Compatible with all MC2200/MC2700 batteries (in device & in spare charger)
- Desk/Wall/Rack mount options

### Additional Accessories for Single Slot Cradle



#### **PWR-BGA12V108W0WW**

Level VI AC/DC power supply (brick, Replacement for PWRS-14000-241R)

**AC Input:** 100-240V, 2.8A

**DC Output:** 12V, 9A, 108W

**Requires:** DC line cord and country specific grounded AC line cord.



#### **CBL-DC-381A1-01**

DC line cord for running multi-slot cradles from a single Level VI power supply PWR-BGA12V108W0WW, Level VI replacement for PWRS-14000-241R



#### **23844-00-00R**

US AC line cord, 7.5 feet long, grounded, three wire for power supplies.



#### **BRKT-SCRD-SMRK-01**

Rack/Wall mounting bracket, allows to install any multi-slot cradle on a wall or a 19" IT rack.



# Cradle System

## Multi-slot Battery Charger



### Multi-Slot Battery Charger:

#### **SAC-MC2X-4SCHG-01**

4-Slot Battery Charger, Charges Four Spare Batteries (Supports both Standard and Extended Capacity Batteries)

**Multi-Slot Battery Cradle Requires:** Power supply **PWR-BGA12V50W0WW**, DC cord **CBL-DC-388A1-01** and country specific 3 wire AC line cord.

## Main Features

- Charge only configurations
- Charges four spare batteries
- Compatible with all MC2200/MC2700
- Desk/Wall/Rack mount options

### Additional Accessories for Single Slot Cradle



#### **PWR-BGA12V50W0WW**

Level VI AC/DC power supply (brick, replacement for PWRS-14000-148R)

**AC Input:** 100-240VAC, 2.4A

**DC Output:** 12VDC, 4.16A, 50W

**Requires:** DC line cord and country specific grounded AC line cord.



#### **CBL-DC-388A1-01**

DC line cord for running the single slot cradles or battery chargers from a single Level VI power supply PWR-BGA12V50W0WW, Level VI replacement for PWRS-14000-148R.



**Various Part Numbers – please contact your Zebra sales associate for more details**

AC line cord, 7.5 feet long, grounded, three wire for power supplies.

# Batteries



## Spare Batteries – Standard / Extended Capacity



### **BTRY-MC2X-35MA-01**

PowerPrecision Lithium Ion battery pack, **3500mAh**, provides 17 hours of use at room temperature before requiring a recharge

**Pack of 10: BTRY-MC2X-35MA-10**



### **BTRY-MC2X-49MA-01**

PowerPrecision Lithium Ion battery pack, **4900mAh**, extended capacity provides over 23 hours of use at room temperature before requiring a recharge

**Pack of 10: BTRY-MC2X-49MA-10**

Note: 4900mAh battery pack is denoted by the battery plus icon to differentiate from the 3500mAh standard battery

# Data Capture



## Attachable Trigger Handle



**TRG-MC2X-SNP1-01**

Attachable trigger handle

- Quickly converts your device into a gun style for data capture intensive applications.
- The handle easily snaps onto the device, no tools required.
- 2-pin electrical interface provides fast data capture.
- Does not block camera or any other feature
- Works in all charging cradles with handle attached
- Optional wrist strap (SG-MC2X-HSTRPH-01), rubber boot (SG-MC2X-RBH2-01) and holster (SG-MC3021212-01R) available

## Screen Protector



**MISC-MC2X-SCRNPT-01**

Tempered Glass Screen Protector - 5 Pack

- Protects displays on both MC2200 and MC2700

# Soft Goods

## Brick and Gun Configurations

### Carrying Solutions



Brick-only



**SG-MC2X-HLSTR-01**  
Fabric holster, secures to a belt or a shoulder strap – belt clip included.  
The shoulder strap can be purchased separately



Gun-only



**SG-MC3021212-01R**  
Fabric holster, secures to a belt or a shoulder strap..  
Requires belt or shoulder strap ordered separately.

### Protective Boots



**SG-MC2X-RB1-01**  
Rubber boot for terminal only, protects the device from wear and.



**SG-MC2X-RBH2-01**  
Rubber boot for terminal with trigger handle, protects the device from wear and.

### Straps



**SG-MC2X-HSTRP-01**  
Spare Hand Strap for Terminal without Trigger Handle



**SG-MC2X-HSTRPH-01**  
Hand Strap for Terminal with Trigger Handle

### Other



**58-40000-007R**  
Shoulder strap  
Universal shoulder strap for fabric holster.



**11-08062-02R**  
Belt for holster  
Universal belt for fabric holster.

# Audio Accessories

## Bluetooth Headset



### HS3100-OTH

HS3100 Rugged Bluetooth Headset Over-The-Head  
Headband includes

- HS3100 Boom Module
- HSX100 OTH Headband Module

# Other Accessories

## Country specific AC grounded line cords

Part Number	Description
23844-00-00R	AC line cord, 7.5 feet long, grounded, three wire. Associated Country: US
50-16000-217R	AC Line Cord, 1.9M, grounded, three wire, AS 3112 plug. Associated Country: Australia, New Guinea
50-16000-218R	AC Line Cord, 1.8M, grounded, three wire, NEMA 1-15P plug. Associated Country: Japan
50-16000-219R	AC Line Cord, 1.8M, three wire, grounded BS1363 plug. Associated Countries: Hong Kong, Iraq, Malaysia, Singapore, United Kingdom
50-16000-220R	AC Line Cord, 1.8M, grounded, three wire CEE 7/7 plug. Associated Countries: Europe, Abu Dhabi, Bolivia, Dubai, Egypt, Iran, Korea, Russia, Vietnam
50-16000-256R	AC Line Cord, 1.8M, grounded, three wire, CEE7/7 plug. Associated Country: Korea
50-16000-257R	AC Line Cord, 1.8M, grounded, three wire, IEC 60320 C13 plug. Associated Country: China
50-16000-669R	AC Lind Cord, 1.9 M grounded, three wire, BS 546 Plug. Associated Country: India
50-16000-671R	AC Line Cord, 1.8M grounded, CIE 23-16 plug. Associated Country: Italy
50-16000-672R	AC Line Cord, 1.9M grounded, three wire, S132 Plug. Associated Country: Israel
50-16000-727R	AC Line Cord, 1.9M grounded, three wire. Associated Country: Brazil

## Country specific wall adapters

Part Number	Description
PWR-WUA5V12W0WW	Level VI power supply (wall adapter) 100-240 VAC, 5V, 2.5A with adapter plugs for world-wide use
PWR-WUA5V12W0AU	Level VI power supply (wall adapter) 100-240 VAC, 5V, 2.5A with Australia plug
PWR-WUA5V12W0BR	Level VI power supply (wall adapter) 100-240 VAC, 5V, 2.5 A with Brazil plug
PWR-WUA5V12W0CN	Level VI power supply (wall adapter) 100-240 VAC, 5V, 2.5A with China plug
PWR-WUA5V12W0EU	Level VI power supply (wall adapter) 100-240 VAC, 5V, 2.5A with Europe plug
PWR-WUA5V12W0GB	Level VI power supply (wall adapter) 100-240 VAC, 5V, 2.5A with UK plug
PWR-WUA5V12W0IN	Level VI power supply (wall adapter) 100-240 VAC, 5V, 2.5A with India plug
PWR-WUA5V12W0KR	Level VI power supply (wall adapter) 100-240 VAC, 5V, 2.5A with Korea plug
PWR-WUA5V12W0US	Level VI power supply (wall adapter) 100-240 VAC, 5V, 2.5A with US plug

